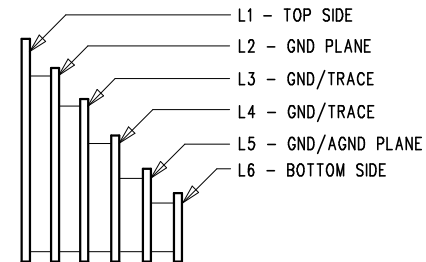


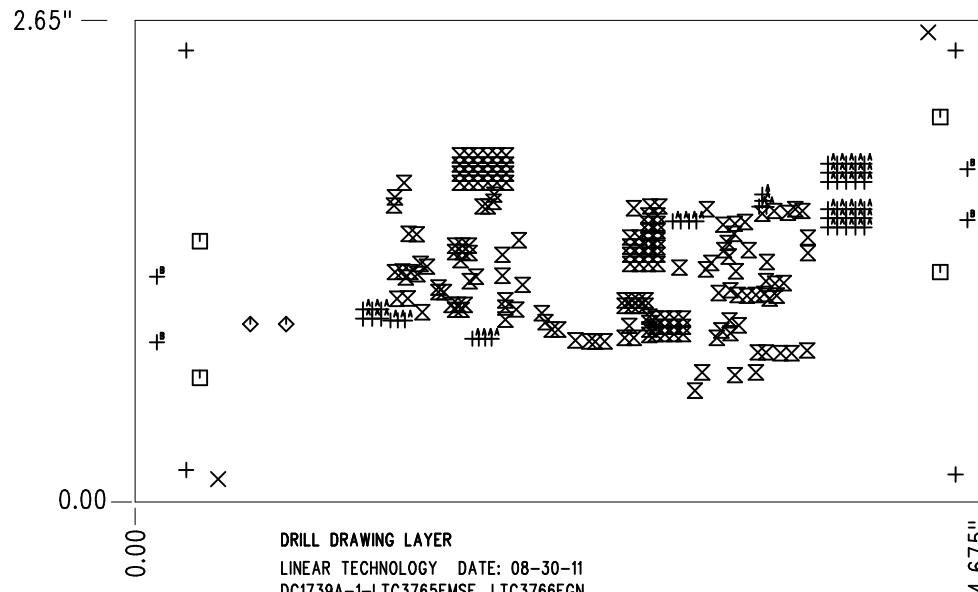
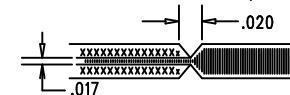
REVISION HISTORY				
ECO	REV	DESCRIPTION	APP. ENG.	DATE
-	2	PRODUCTION	DAVID B.	08-30-11

LAYER STRUCTURE



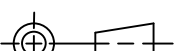
NOTES: UNLESS OTHERWISE SPECIFIED

- FAB PER IPC-A-600.
- MATERIAL: -LEAD FREE ASSEMBLY COMPLIANT, ISOLA FR-370HR OR EQUIVALENT.
-FINISHED THICKNESS TO BE 0.062" +/- .005"
-TOTAL OF 6 LAYERS WITH 4 OZ. CU ON THE OUTER LAYERS AND 2 OZ. CU ON THE INNER LAYERS.
-FLAMMABILITY RATING: 94 V-0 MINIMUM.
- SIZE: CUT TO DIMENSIONS AND TOLERANCES SHOWN.
0.00" ARE PRIMARY DATUMS.
- DRILLING: -DRILL HOLES PER SCHEDULE. PLATE THROUGH HOLES WITH COPPER, 0.001" THICK MIN.
-ALL HOLE SIZES ARE SPECIFIED AFTER PLATING.
-HOLE LOCATION TOLERANCES ARE +/-0.003" IN RELATION TO CENTER
- FINISH: -SMOBC USING LPI BOTH SIDES, COLOR GREEN.
-GOLD IMMERSION BOTH SIDES.
-FOR SILKSCREENS: USE WHITE NON-CONDUCTIVE INK.
- DO NOT ALTER ARTWORK e.g. TO ADD LOGO OR DATE CODE.
PAD SIZE CAN BE MODIFIED TO MEET END FINISH.
- PCBS ARE TO BE RoHS COMPLIANT.
- SCORING FOR PANELIZED PCB (PRODUCTION FAB ONLY):



DRILL DRAWING LAYER
LINEAR TECHNOLOGY DATE: 08-30-11
DC1739A-1-LTC3765EMSE, LTC3766EGN
ACTIVE CLAMP FORWARD CONVERTER
WITH DIRECT FLUX LIMIT

SIZE	QTY	SYM	PLATED	TOL
0.187	4	+	NO	+/-0.003
0.07	2	X	NO	+/-0.003
0.207	4	□	YES	+/-0.003
0.035	2	◇	YES	+/-0.003
0.015	174	⊗	YES	+/-0.003
0.025	51	+ ^A	YES	+/-0.003
0.094	4	+ ^B	YES	+/-0.003

UNLESS OTHERWISE SPECIFIED		APPROVALS		1630 MCCARTHY BLVD MILPITAS, CA 95035 PH: (408)432-1900 www.linear.com LTC CONFIDENTIAL- FOR CUSTOMER USE ONLY		
DIMENSIONS ARE IN INCHES TOLERANCES: 0.XX" = ±0.01" 0.XXX" = ±0.005" INTERPRET DIM AND TOL PER ASME Y14.5M-1994 THIRD ANGLE PROJECTION		PCB DES.	AK	TECHNOLOGY TITLE: FABRICATION DRAWING ACTIVE CLAMP FORWARD CONVERTER WITH DIRECT FLUX LIMIT		
		APP ENG.	DAVID B.			
				SIZE	IC NO. LTC3765EMSE, LTC3766EGN	REV
				N/A	DEMO CIRCUIT 1739A	2
		SCALE = NONE		FILENAME: DC1739A-1.PCB		SHT 1 OF 1